

**ACKNOWLEDGEMENT**

State of California  
 County of Santa Clara  
 On this 21<sup>st</sup> day of August, 1959 before me, the undersigned, a Notary Public in and for said County, state residing between July seven and August twenty, 1959, personally appeared William H. Heiss, Jr. accompanied personally by William H. Heiss, Sr. and William H. Heiss, III, known to me to be the Associates, Secretary and Assistant Secretary, respectively of Lawyers Title Guaranty Company, a California Corporation the corporation that created the within instrument as herein set forth to me to be the persons who executed the same on behalf of the corporation named herein & acknowledged to me that such corporation executed the same pursuant to the by-laws of a resolution of its Board of Directors as shown in the within wherein I have subscribed and my hand and official seal affixed the day and year first above written.

My commission expires 2-15-62

*William H. Heiss, Jr.*  
*William H. Heiss, Sr.*  
*William H. Heiss, III*

**CITY CLERK'S CERTIFICATE**

It is certified that the map or plat is shown above is correct in that all streets and portions thereof and the Public Service and Utility Departments (P.U.D.) as shown on said map & shown on the use intended and that all Public Utility Departments (P.U.D.) as shown on said map and other P.U.D. identification on public use are hereby not accepted. A so accepted on behalf of the public are the areas shown on this map as I reserve subject to the terms of the plan within set forth on this sheet. I hereby certify that the foregoing were accepted by the City Council of the City of Milpitas, California, at a meeting held on the 11<sup>th</sup> day of August, 1959.

*[Signature]*  
 City Clerk of Milpitas

**COUNTY RECORDERS CERTIFICATE**

File No. 2059347  
 Accepted for record and filed in Book 251 of Map of August 21, 1959 Santa Clara County Records, this 21<sup>st</sup> day of August, 1959, at 11:00 A.M.

*[Signature]*  
 Santa Clara County Recorder

**ACKNOWLEDGEMENT**

County of Santa Clara  
 On this 21<sup>st</sup> day of August, 1959, before me James B. Smith, a Notary Public in and for said County and State, residing between July seven and August twenty, 1959, personally appeared William H. Heiss, Jr. and William H. Heiss, Sr. and William H. Heiss, III, known to me to be the persons who executed the same on behalf of the corporation named herein and acknowledged to me that such corporation executed the same pursuant to the by-laws of a resolution of its Board of Directors as shown in the within wherein I have subscribed and my hand and official seal affixed the day and year first above written. My commission expires February 15, 1962.

*James B. Smith*  
 Notary Public



TRACT NO 4549

VICTORIA PARK

BEING A PORTION OF THE TULARCITOS RANCHO AND LYING ENTIRELY WITHIN THE CITY OF...

MILPITAS

SANTA CLARA COUNTY, CALIFORNIA

Containing 2.2 Acres

JENNINGS McDERMOTT HEISS, INC.

City of Milpitas, California

August, 1959

**SUBJECT'S UTILITIES**

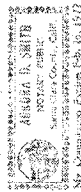
WE HEREBY CERTIFY THAT WE ARE THE OWNERS OF OR HAVE SOME RIGHT TITLE OR INTEREST IN AND TO THE REAL PROPERTY INCLUDED WITHIN THE SUBDIVISION SHOWN UPON THIS MAP, THAT WE ARE THE ONLY PERSONS WHOSE CONSENT IS NECESSARY TO PASS THE MAP AND SUBSTITUTION AS SHOWN WITHIN THE BLUE BORDER LINE; THAT WE HEREBY OFFER FOR DEDICATION TO PUBLIC USE ALL STREETS AND PORTIONS OF STREETS NOT HERETOFORE EXISTING AS SHOWN ON THE HEREIN MAP UP SAID SUBDIVISION, AND THAT WE DEDICATE TO PUBLIC USE RIGHTEWAYS FOR ANY PUBLIC USES UNDER, UPON AND OVER SAID STREETS AND SAID PORTIONS THEREOF.

**WE ALSO DEDICATE TO PUBLIC USE:**

RIGHTS FOR ANY AND ALL PUBLIC SERVICE FACILITIES, INCLUDING POLS, LINES, CONDUITS, CORK SIMERS, SANITARY SIMERS, WATER MAINS, PUBLIC UTILITIES AND APPURTENANCES TO THE ABOVE UNDER, ON OR OVER THOSE CERTAIN STRIPS OF LAND DESIGNATED AS "P.U.D." PUBLIC SERVICE & UTILITY STRIPS AND RESERVED RIGHTS UNDER, UPON OR OVER THOSE CERTAIN STRIPS OF LAND DESIGNATED AS "P.U.D." PUBLIC UTILITY RESERVATIONS.

THE ABOVE-DEDICATED PUBLIC SERVICE FACILITIES AND PUBLIC UTILITY RESERVATIONS SHALL BE SUBJECT TO THE TERMS AND CONDITIONS SET FORTH IN THE APPROPRIATE PERMITS, REGULATIONS, ORDINANCES AND OTHER LAWS, ORDINANCES, LAWFUL PERCELS AND LAWFUL UNAPPROVED ROOF EVERHANGS.

WE ALSO DEDICATE TO THE CITY OF MILPITAS THE AREAS SHOWN ON THIS MAP AS "L" RESERVED TO ENABLE THE CITY TO CONTROL ACCESS TO THE RESPECTIVE PUBLIC STREET WHICH SAID RESERVE STRIP ABUTS. SAID RESERVE STRIP IS NOT PART OF SAID PUBLIC STREET HOWEVER, UNTIL SAID STREET IS EXTENDED AND ACCEPTED BY THE CITY.



*James B. Smith*  
 Notary Public

**SURVEYOR'S CERTIFICATE**

I, Robert Taylor, a Licensed Land Surveyor in the State of California, hereby certify that this map consisting of two sheets, correctly represents a survey made under my supervision during July, 1958. I find the survey to true and complete a stream, that all monuments exist as shown on the map, and that their positions are sufficient to enable the survey to be retraced.

*Robert Taylor*  
 Licensed Land Surveyor  
 L.S. No. 7726

**CITY ENGINEER'S CERTIFICATE**

I hereby certify that I have examined the within final map of tract No. 4549 Victoria Park, that the subdivision shown thereon is substantially the same as it appears on the tentative map and any approved alterations thereof, that all provisions of the Subdivision Map Act and of any local ordinances applicable at the time of approval of the tentative map have been complied with and I am satisfied and that said map is technically correct.

*William H. Heiss, Jr.*  
 William H. Heiss, Jr.  
 City Engineer  
 City of Milpitas, California  
 August 21, 1959



*James B. Smith*  
 Notary Public

**ACKNOWLEDGEMENT**

County of Santa Clara  
 On this 21<sup>st</sup> day of August, 1959, before me James B. Smith, a Notary Public in and for said County and State, residing between July seven and August twenty, 1959, personally appeared William H. Heiss, Jr. and William H. Heiss, Sr. and William H. Heiss, III, known to me to be the persons who executed the same on behalf of the corporation named herein and acknowledged to me that such corporation executed the same pursuant to the by-laws of a resolution of its Board of Directors as shown in the within wherein I have subscribed and my hand and official seal affixed the day and year first above written. My commission expires February 15, 1962.

*James B. Smith*  
 Notary Public

**TRACT N° 4549**  
*Tropic Park*

CONSISTS OF TWO SHEETS  
 SHEET NUMBER TWO

Being a portion of Tularcitos Rancho  
 lying entirely within the City of  
MILPITAS

SCALE 1/4" = 100'

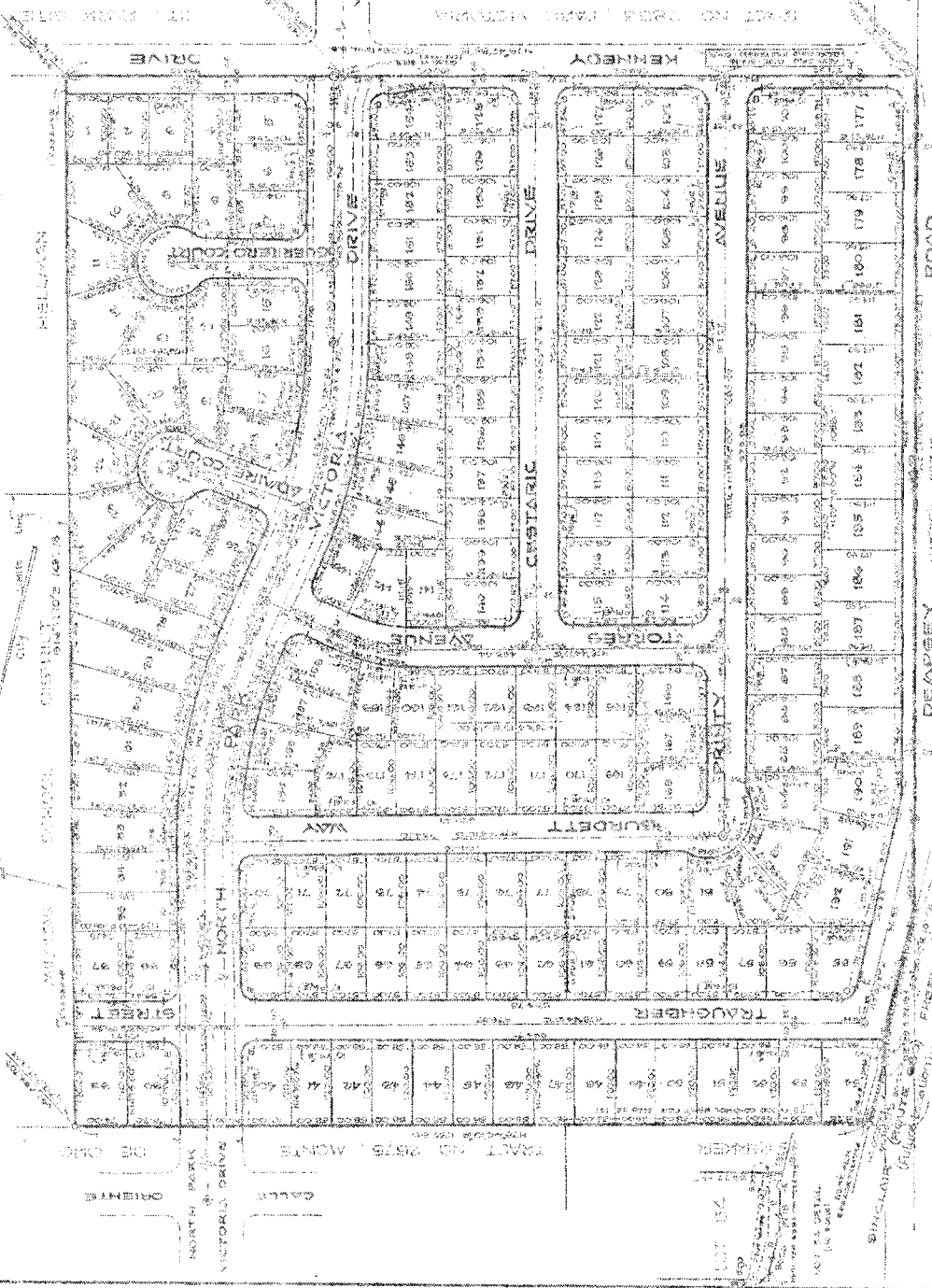
AUGUST 1968

**Jennings McDermott Heise, Inc.**

CIVIL ENGINEERS - LAND PLANNERS

San Jose

NO.	AREA	PERCENTAGE	ADJUSTED AREA
1	1.00	1.00	1.00
2	1.00	1.00	1.00
3	1.00	1.00	1.00
4	1.00	1.00	1.00
5	1.00	1.00	1.00
6	1.00	1.00	1.00
7	1.00	1.00	1.00
8	1.00	1.00	1.00
9	1.00	1.00	1.00
10	1.00	1.00	1.00
11	1.00	1.00	1.00
12	1.00	1.00	1.00
13	1.00	1.00	1.00
14	1.00	1.00	1.00
15	1.00	1.00	1.00
16	1.00	1.00	1.00
17	1.00	1.00	1.00
18	1.00	1.00	1.00
19	1.00	1.00	1.00
20	1.00	1.00	1.00
21	1.00	1.00	1.00
22	1.00	1.00	1.00
23	1.00	1.00	1.00
24	1.00	1.00	1.00
25	1.00	1.00	1.00
26	1.00	1.00	1.00
27	1.00	1.00	1.00
28	1.00	1.00	1.00
29	1.00	1.00	1.00
30	1.00	1.00	1.00
31	1.00	1.00	1.00
32	1.00	1.00	1.00
33	1.00	1.00	1.00
34	1.00	1.00	1.00
35	1.00	1.00	1.00
36	1.00	1.00	1.00
37	1.00	1.00	1.00
38	1.00	1.00	1.00
39	1.00	1.00	1.00
40	1.00	1.00	1.00
41	1.00	1.00	1.00
42	1.00	1.00	1.00
43	1.00	1.00	1.00
44	1.00	1.00	1.00
45	1.00	1.00	1.00
46	1.00	1.00	1.00
47	1.00	1.00	1.00
48	1.00	1.00	1.00
49	1.00	1.00	1.00
50	1.00	1.00	1.00
51	1.00	1.00	1.00
52	1.00	1.00	1.00
53	1.00	1.00	1.00
54	1.00	1.00	1.00
55	1.00	1.00	1.00
56	1.00	1.00	1.00
57	1.00	1.00	1.00
58	1.00	1.00	1.00
59	1.00	1.00	1.00
60	1.00	1.00	1.00
61	1.00	1.00	1.00
62	1.00	1.00	1.00
63	1.00	1.00	1.00
64	1.00	1.00	1.00
65	1.00	1.00	1.00
66	1.00	1.00	1.00
67	1.00	1.00	1.00
68	1.00	1.00	1.00
69	1.00	1.00	1.00
70	1.00	1.00	1.00
71	1.00	1.00	1.00
72	1.00	1.00	1.00
73	1.00	1.00	1.00
74	1.00	1.00	1.00
75	1.00	1.00	1.00
76	1.00	1.00	1.00
77	1.00	1.00	1.00
78	1.00	1.00	1.00
79	1.00	1.00	1.00
80	1.00	1.00	1.00
81	1.00	1.00	1.00
82	1.00	1.00	1.00
83	1.00	1.00	1.00
84	1.00	1.00	1.00
85	1.00	1.00	1.00
86	1.00	1.00	1.00
87	1.00	1.00	1.00
88	1.00	1.00	1.00
89	1.00	1.00	1.00
90	1.00	1.00	1.00
91	1.00	1.00	1.00
92	1.00	1.00	1.00
93	1.00	1.00	1.00
94	1.00	1.00	1.00
95	1.00	1.00	1.00
96	1.00	1.00	1.00
97	1.00	1.00	1.00
98	1.00	1.00	1.00
99	1.00	1.00	1.00
100	1.00	1.00	1.00



**BASIS OF BEARINGS, NOTES & LEGEND**  
 All bearings and distances are given in feet. Bearings are based on the National Grid. Distances are given in feet. The ground is assumed to be level. All bearings are given in degrees, minutes and seconds. All distances are given in feet. The plan is based on the following data:  
 1. Indicated Monument Bound  
 2. Indicated Monument Bound  
 3. Indicated Monument Bound  
 4. Indicated Monument Bound  
 5. Indicated Monument Bound  
 6. Indicated Monument Bound  
 7. Indicated Monument Bound  
 8. Indicated Monument Bound  
 9. Indicated Monument Bound  
 10. Indicated Monument Bound  
 11. Indicated Monument Bound  
 12. Indicated Monument Bound  
 13. Indicated Monument Bound  
 14. Indicated Monument Bound  
 15. Indicated Monument Bound  
 16. Indicated Monument Bound  
 17. Indicated Monument Bound  
 18. Indicated Monument Bound  
 19. Indicated Monument Bound  
 20. Indicated Monument Bound  
 21. Indicated Monument Bound  
 22. Indicated Monument Bound  
 23. Indicated Monument Bound  
 24. Indicated Monument Bound  
 25. Indicated Monument Bound  
 26. Indicated Monument Bound  
 27. Indicated Monument Bound  
 28. Indicated Monument Bound  
 29. Indicated Monument Bound  
 30. Indicated Monument Bound  
 31. Indicated Monument Bound  
 32. Indicated Monument Bound  
 33. Indicated Monument Bound  
 34. Indicated Monument Bound  
 35. Indicated Monument Bound  
 36. Indicated Monument Bound  
 37. Indicated Monument Bound  
 38. Indicated Monument Bound  
 39. Indicated Monument Bound  
 40. Indicated Monument Bound  
 41. Indicated Monument Bound  
 42. Indicated Monument Bound  
 43. Indicated Monument Bound  
 44. Indicated Monument Bound  
 45. Indicated Monument Bound  
 46. Indicated Monument Bound  
 47. Indicated Monument Bound  
 48. Indicated Monument Bound  
 49. Indicated Monument Bound  
 50. Indicated Monument Bound  
 51. Indicated Monument Bound  
 52. Indicated Monument Bound  
 53. Indicated Monument Bound  
 54. Indicated Monument Bound  
 55. Indicated Monument Bound  
 56. Indicated Monument Bound  
 57. Indicated Monument Bound  
 58. Indicated Monument Bound  
 59. Indicated Monument Bound  
 60. Indicated Monument Bound  
 61. Indicated Monument Bound  
 62. Indicated Monument Bound  
 63. Indicated Monument Bound  
 64. Indicated Monument Bound  
 65. Indicated Monument Bound  
 66. Indicated Monument Bound  
 67. Indicated Monument Bound  
 68. Indicated Monument Bound  
 69. Indicated Monument Bound  
 70. Indicated Monument Bound  
 71. Indicated Monument Bound  
 72. Indicated Monument Bound  
 73. Indicated Monument Bound  
 74. Indicated Monument Bound  
 75. Indicated Monument Bound  
 76. Indicated Monument Bound  
 77. Indicated Monument Bound  
 78. Indicated Monument Bound  
 79. Indicated Monument Bound  
 80. Indicated Monument Bound  
 81. Indicated Monument Bound  
 82. Indicated Monument Bound  
 83. Indicated Monument Bound  
 84. Indicated Monument Bound  
 85. Indicated Monument Bound  
 86. Indicated Monument Bound  
 87. Indicated Monument Bound  
 88. Indicated Monument Bound  
 89. Indicated Monument Bound  
 90. Indicated Monument Bound  
 91. Indicated Monument Bound  
 92. Indicated Monument Bound  
 93. Indicated Monument Bound  
 94. Indicated Monument Bound  
 95. Indicated Monument Bound  
 96. Indicated Monument Bound  
 97. Indicated Monument Bound  
 98. Indicated Monument Bound  
 99. Indicated Monument Bound  
 100. Indicated Monument Bound

This report was prepared by Woodward-Clyde Associates in June, 1968. July 1968. Project number JS 106-A.

All have shown the street frontage of each and every lot in this tract.

File Number 898167 Filed for record this day of 1968 at Stockton, California. Page 8 of 12